

7

ED AWERA

ETC

ETC

DEAR ED

ENCLOSED IS THE PROPOSAL FOR INSTALLATION OF THE 7 METER  
EARTH STATION RECEIVE ANTENNA.

THE PRICE, AS PROPOSED, INCLUDES EXCAVATION FOR  
FOUNDATION, PROVIDING AND SETTING OF FORMS, REBAR AND CONCRETE,  
CUTTING ACCESS IN BUILDING WALL FOR POWER, CONTROL AND  
RECEIVE LINES, ERECTION, ASSEMBLY AND ORIENTATION OF DISH

I HAVE ALSO INCLUDED ~~SOME~~ EXPLANATORY DRAWINGS.

IF YOU HAVE ANY QUESTIONS, PLEASE FEEL FREE TO CALL

SINCERELY,

AWT

DIP OF ENG

DTNS

DTNS

### THE WORK

the contractor shall perform all the work required by the Contract Documents for excavation, form and concrete work necessary to support a Comtech 7.3 meter Satellite dish and ~~assembly~~ assembly of same in the manner more fully described in the drawings and specifications, also to align dish, run cable for signal and control, and provide labor for the installation of the WALTON <sup>GAS</sup> HEATER system. Also the installation of two (2) two (2) inch conduits <sup>PARTICLE</sup> FOR

### DIPPERING SITE CONDITIONS

IN THE EVENT THE CONTRACTOR ENCOUNTERS SOIL, OR <sup>LEDGE</sup> <sup>OTHER</sup> SITE CONDITIONS WHICH WOULD REQUIRE ADDITIONAL LABOR AND OR EQUIPMENT, THEN THE CONTRACTOR shall be entitled to a reasonable extension of time in which to complete the Contract and a corresponding increase in the Contract price, such increase to include an allowance for a reasonable profit. THIS ALSO would include delays of Owner supplied items

ADVANCED TELECOMMUNICATIONS NETWORK SYSTEMS, HEREINAFTER ATNS, PROPOSES TO PROVIDE ALL THE EQUIPMENT AND LABOR NECESSARY TO COMPLETE THE INSTALLATION OF A 7 METER SATELLITE EARTH STATION RECEIVE ANTENNA IN A MANNER SPECIFIED IN THE ATTACHED DRAWINGS AND SPECIFICATIONS AND AS ITEMIZED BELOW.

- 1) EXCAVATION OF FOUNDATION
- 2) PROVISION AND BUILDING OF FORMS
- 3) PROVISION AND SETTING OF REBAR
- 4) SETTING OF MOUNTING BOLTS  
(TEMPLATE AND BOLTS PER FXT)
- 5) PROVISION AND SETTING OF CONCRETE
- 6) PROVISION OF CRANE
- 7) PROVISION OF ALL NECESSARY LABOR
- 8) BORING OF WALL FOR POWER AND SIGNAL
- 9) ORIENTATION OF DISH

THE TOTAL PRICE FOR THIS PROJECT IS \$ ~~14960~~ 15960.00, WITH THE PROPOSED PAYMENT SCHEDULE AS FOLLOWS:

|                                   |                       |          |
|-----------------------------------|-----------------------|----------|
| 55% UPON SIGNING OF CONTRACT      | <del>\$ 8778.00</del> | 8778.00  |
| 22.5% UPON COMPLETION             | <del>\$ 3366.00</del> | 3591.00  |
| 22.5% NET 15 DAYS UPON COMPLETION | <del>\$ 3366.00</del> | 3591.00  |
|                                   | <del>14960.00</del>   | 15960.00 |

3.8

ED ALVIRA

DEAR ED,

ENCLOSED IS THE PROPOSAL FOR BOTH THE 3.8 METER AND 5.0 METER RECEIVER ONLY DISHES.

THE PRICE, AS PROPOSED, INCLUDES ALL THE LABOR, HARDWARE AND EQUIPMENT NECESSARY TO REMOVE THE DISHES FROM THE NEEDHAM SITE, TRANSPORT TO THE DEDHAM SITE, INSTALL MOUNTING BOLTS FOR THE DISHES, FABRICATE AND GALVANIZE A 5" OD MAST AND MOUNTING FLANGE FOR THE 3.8 METER DISH, LIFT DISHES TO THE ROOF, BOLT IN PLACE AND PERFORM ORIENTATION FOR BOTH ~~BY~~ THE 5 AND 3.8 METER DISH

AS YOU HAD MENTIONED TO ME ON THURSDAY 12 MARCH 92 YOU COULD NOT MOVE BOTH DISHES AT ONCE. TO ACCOMPLISH THIS WHAT I ~~SUGGEST~~ <sup>PROPOSE</sup> TO DO IS MOVE THE 5 METER DISH <sup>DRILLING</sup> FIRST, IN ORDER TO USE THE MOUNT AS A <sup>TEMPLATE</sup>, AND BOLT IN PLACE ~~ON~~ BOTH THE 5 METER DISH AND THE FABRICATED MOUNT FOR THE 3.8 METER DISH. THIS WOULD <sup>PUT</sup> ~~MAKE~~ THE 5 METER DISH <sup>IN SERVICE</sup> ~~AVAILABLE~~ AT THE DEDHAM SITE ENABLING US TO MOVE THE 3.8 METER DISH INTACT ON THE TRAILER IT IS CURRENTLY MOUNTED TO. THIS PLAN WOULD INSURE THE USE OF ~~AN~~ ONE SATELLITE RECEIVER ~~IN USE~~ AT BOTH SITES ~~WITH THE~~ ENDING WITH BOTH RECEIVER DISHES INSTALLED AT THE DEDHAM SITE.

I HAVE ALSO INCLUDED SOME EXPLANATORY DRAWINGS. IF THERE ARE ANY QUESTIONS PLEASE FEEL FREE TO CALL

SILVERMAN

PROPOSAL

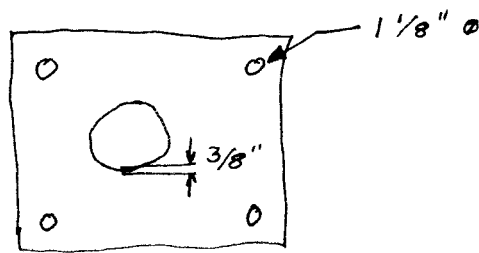
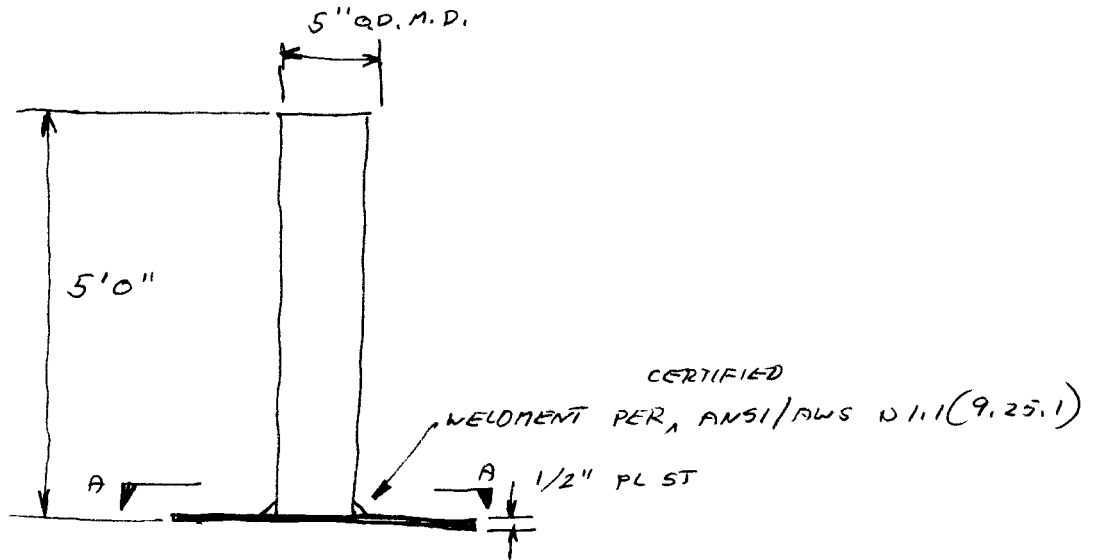
ADVANCED TELECOMMUNICATIONS NETWORK SYSTEMS, HEREAFTER REFERRED TO AS ATNS, PROPOSES TO PROVIDE ALL THE EQUIPMENT AND LABOR NECESSARY TO COMPLETE THE RELOCATION OF A 3.8 AND 5.0 METER RECEIVE DISH IN A MANNER SPECIFIED IN THE ATTACHED DRAWINGS AND SPECIFICATIONS AND AS ITEMIZED BELOW.

- 1) REMOVAL OF 3.8 AND 5.0 METER RECEIVE DISH(ES)
- 2) PROVISION OF DRILLING EQUIPMENT
- 3) PROVISION OF MOUNTING BOLTS
- 4) PROVISION OF CONCRETE FOR MOUNTING BOLTS
- 5) PROVISION OF CRANE FOR REMOVAL AND INSTALLATION OF DISH(ES)
- 6) PROVISION OF ALL NECESSARY LABOR
- 7) ORIENTATION OF BOTH DISHES
- 8) PROVIDE FABRICATE AND HOT DIP GALVANIZE MOUNTING PIPE AND FLANGE ASSEMBLY FOR 3.8 METER DISH MOUNT
- 9) PROVISION OF FLAT BED TRUCK FOR TRANSPORT OF 5 METER  
 ⇒ DISH
- 10) PROVISION OF VEHICLE TO TOW 3.8 METER DISH TRAILER TO DEDHAM SITE

THE TOTAL PRICE FOR THIS PROJECT IS 9987.00 WITH THE PROPOSED PAYMENT SCHEDULE AS FOLLOWS:

|       |                             |         |
|-------|-----------------------------|---------|
| 55%   | UPON SIGNING OF CONTRACT    | 5492.85 |
| 22.5% | UPON COMPLETION             | 2247.08 |
| 22.5% | NET 15 DAYS UPON COMPLETION | 2247.07 |

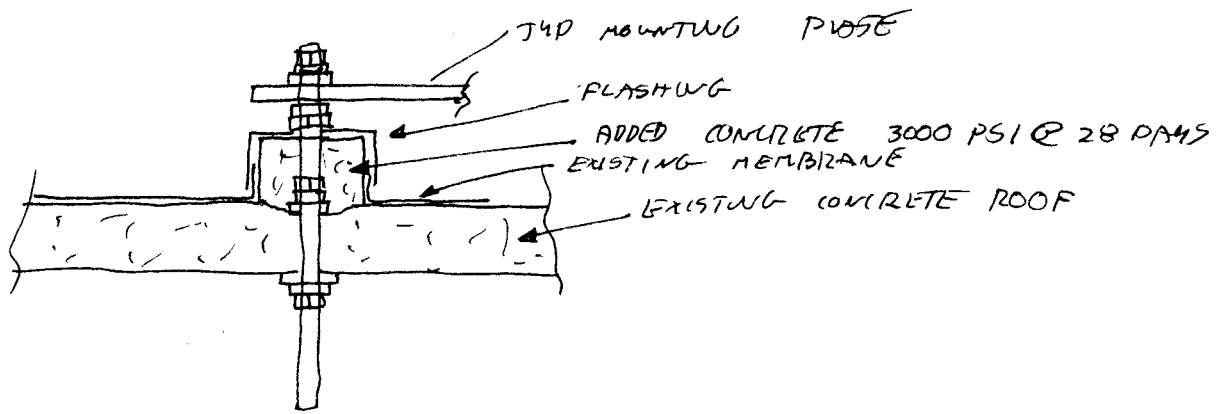
### 3.8 METER DISH PIPE MOUNT



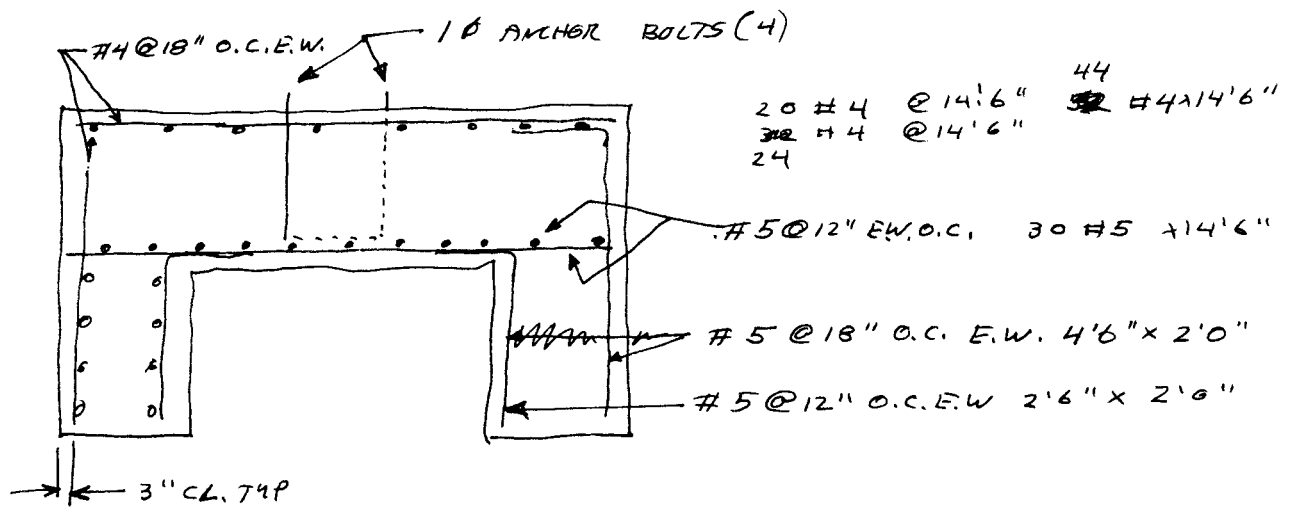
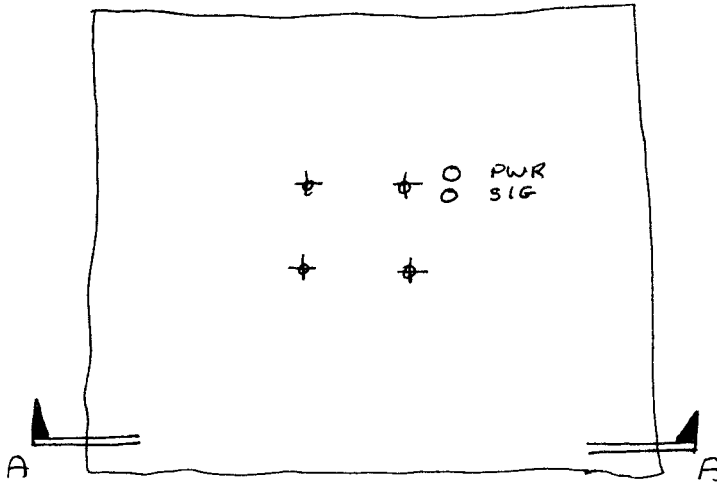
SECTION "A-A"

1. PIPE MOUNT TO BE WELDED PER ANSI/AWS D.1.1 (9.25.1)
2. PIPE MOUNT TO BE FABRICATED FROM, <sup>CERTIFIED</sup> US OR CANADIAN STEEL
3. PIPE MOUNT TO GALVANIZED PER ~~A 123~~ ~~80005~~ ASTM A 123, A 143, A 153, A 384, A 385, A 780

TYPICAL MOUNTING BOLT FOR 3.8 METER AND 5.0 M



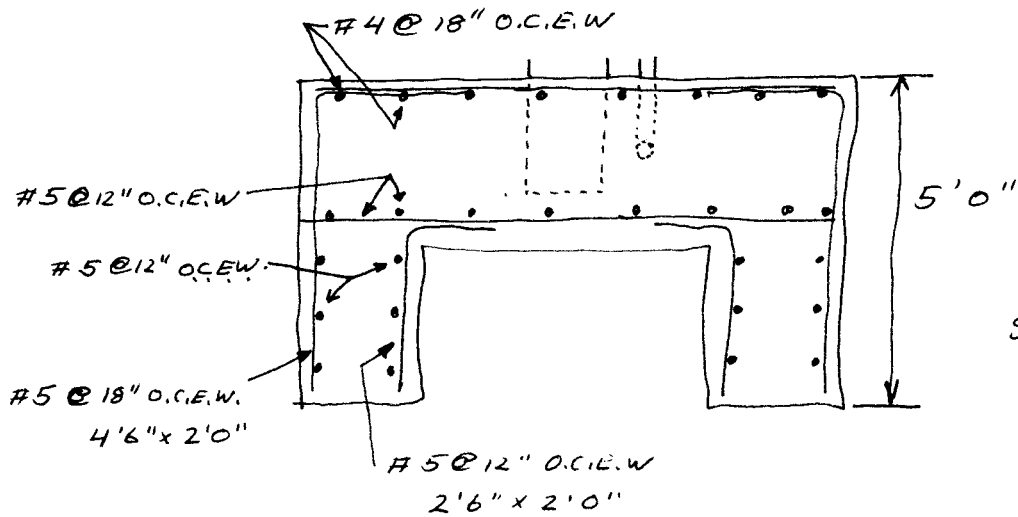
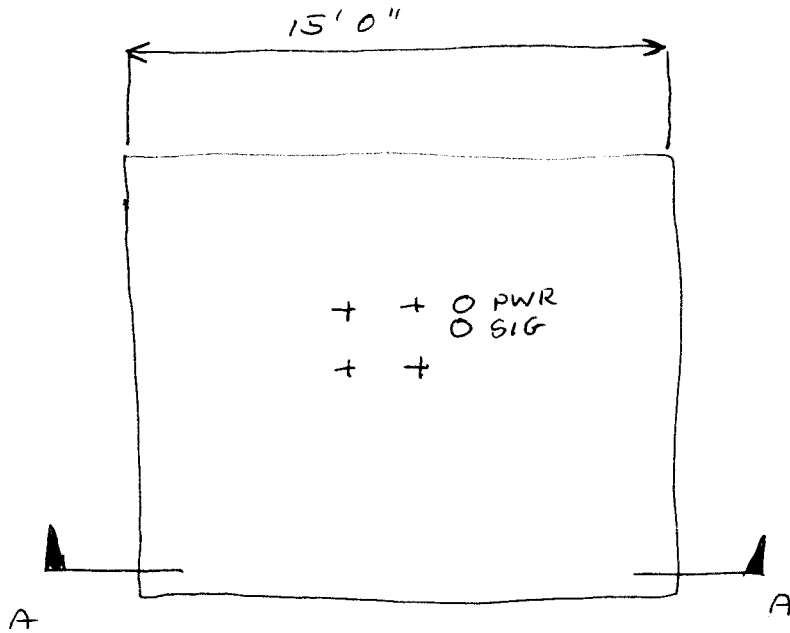
# 7 METER DISH FOUNDATION



SECTION "A-A"

- 44 #4 x 14'6"
- 30 #5 x 14'6"
- 60 #5 2'6" x 2'0"
- 40 #5 4'6" x 2'6"





NOTE

1. SOIL BEARING PRESSURE TO BE MIN 2000 P.S.F.
2. CONCRETE TO BE 3000 P.S.I. COMPRESSIVE STRENGTH @ 28 DAYS
3. REINFORCING BARS TO BE GRADE 60 FOR #4 AND LARGER
4. DO NOT WELD ANCHOR BOLTS
5. FROST LINE TO BE MAX OF 2'6" BELOW FINISHED GRADE
6. FOOTING DESIGNED FOR 150 M.P.H. WINDS